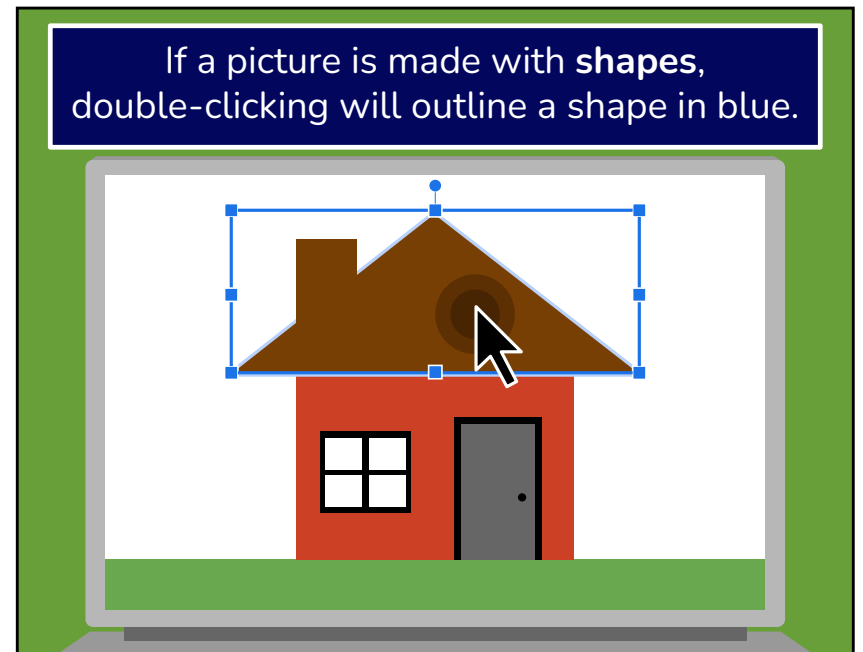


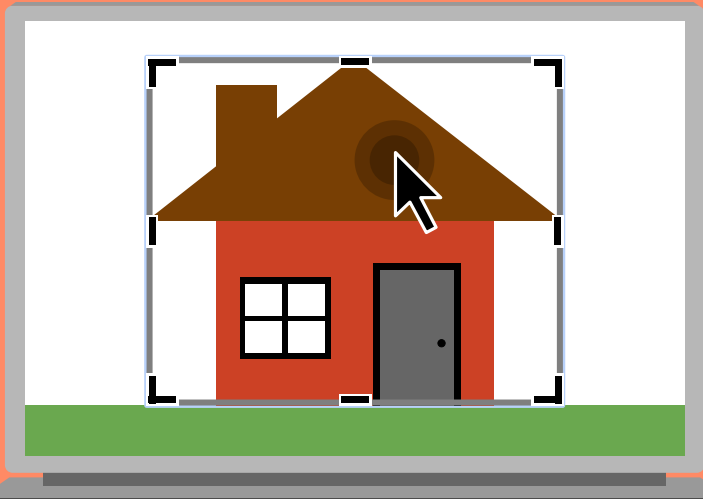
# HOW TO SPOT

A **SHAPE**  
**GRAMS**

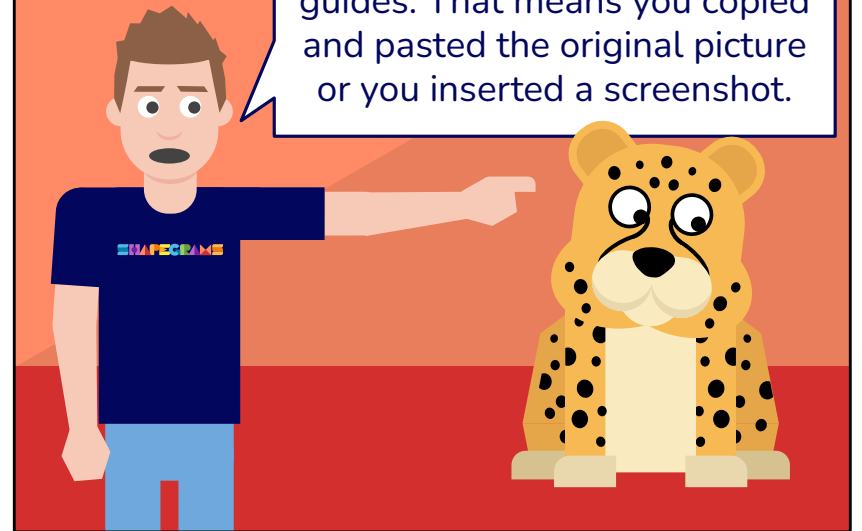
CHEAT-ah



If a picture is an **image**, double-clicking reveals black cropping guides.



Your picture has black cropping guides. That means you copied and pasted the original picture or you inserted a screenshot.



Completing the challenge by drawing your own shapes is the way **FUR** you to get better at digital drawing.

And, when your picture is made with shapes, you can **PURR-sonalize** it.



This message is brought to you by Shapegrams.com

